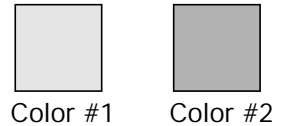


Piecing Tutorial

working with odd shaped pieces

Fabric you will need

2 scrap pieces of fabric.



Special Instructions

All seams are 1/4".

Cutting the Fabric

Qty	Piece #1	Color/Name
1	#1	#1
1	#2	#2

Marking the Pieces

Take your pattern piece #1 and lay it over the right side of fabric piece #1. Take two straight pins and poke them thru the corners of the sewing lines as shown in Figure 1. Turn fabric over and mark, with fabric marker, where pins come out as shown in Figure 2. Do the same with piece #2.

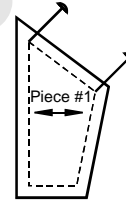


Figure 1

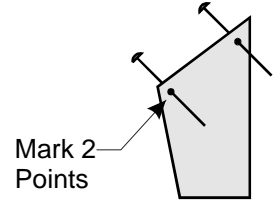


Figure 2

Making the Strip

Lay piece #2 over piece #1 with right sides together. Line up the points you marked. You can use the straight pins to poke thru piece #2 and then piece #1 to help line up the points as shown in Figure 3. Hold the pieces together and do not let them slip. Sew a 1/4" seam along the edge as shown in Figure 4. Open the pieces and press. Measure the distance indicated in Figure 5.

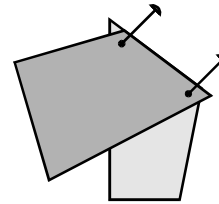


Figure 3

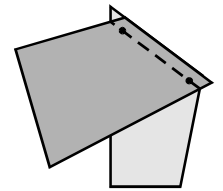


Figure 4

If you get 5-1/2" you have passed this tutorial!

This tutorial is provided by
www.cddesigns.com

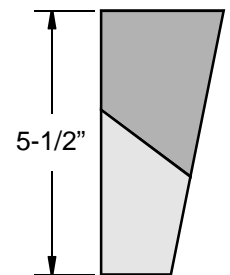


Figure 5

Electronic Patterns by www.cddesigns.com

Copyright © 2004 CD Designs. All rights reserved.

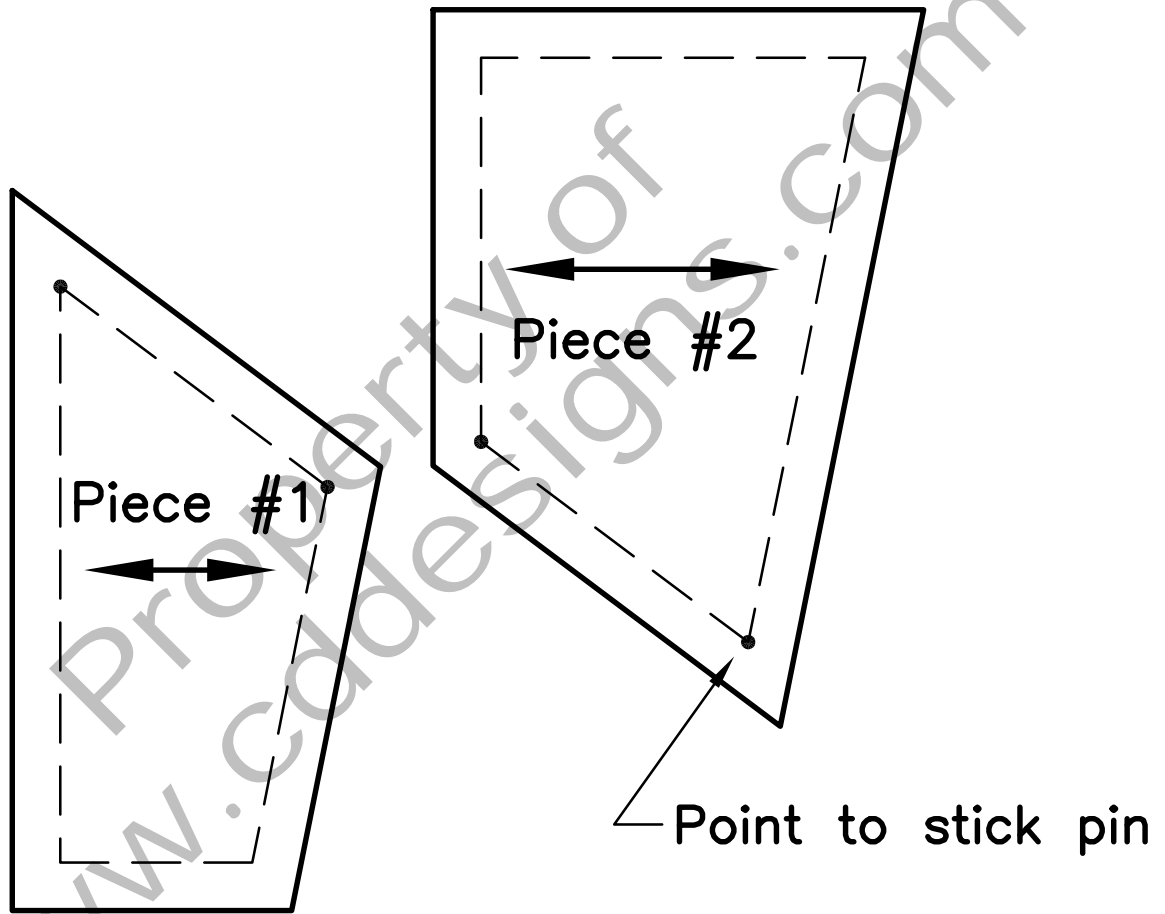
This pattern is the property of CD Designs and is protected by copyright.

Any reproduction, except for personal use, in whole or in part is strictly prohibited.

Piecing01.cdr

Piecing Tutorial

Cutting Templates



measure this scale
before you cut

